



## Everseal<sup>™</sup>

### High-Quality Insulation Cork Tape

HVAC/R | Hot & Cold-Water Piping  
Flexible self-adhering cork tape for wrapping non-critical hot and cold pipes.

Available in 1/8" thick x 2" wide x 30' long rolls;  
12 rolls packaged in bulk plastic bag  
Color - Black

### Superior performance

Adheres to a variety of dry metals

Retards heat gain and loss

Minimizes condensation

Dampens sound

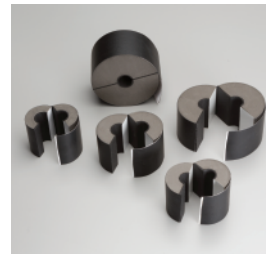
Wide service temperature range: -20°F to 200°F  
(-29°C to 93°C)

### Safe for indoor environments

Minimal non-harmful odor

Asbestos-free

### Aeroflex insulation system solutions



#### Aerofix<sup>®</sup>

Light-weight, rigid pipe supports, pre-insulated with closed-cell EPDM foam rubber and encased with zero-perm EPDM polymer membrane. Includes built-in pressure sensitive Protape<sup>®</sup> closure system.



#### AeroFit<sup>™</sup>

Pre-fabricated fitting covers made of closed-cell EPDM rubber for fast installation on HVAC and plumbing piping.



#### Aeroflex Adhesives

Specially formulated adhesives for bonding and vapor-sealing Aerocel insulation. Fast tack and LVOC formulations available.



**Product:** Polymer-based material consisting of synthetic rubbers, asphalt and approximately 50% cork by volume. Consistency is rubbery and grainy. Contains no asbestos. Color - Black.

**Physical and Operational Properties**

Property	Test Value/Rating	Test Method
Thermal Conductivity @ 75°F mean temperature	60 Btu.in/hr.ft <sup>2</sup> .°F	ASTM C 518
Service Temperature, CONTINUOUS	-20°F to 200°F -29°C to 93°C	ASTM C 411
Ozone Resistance	Good	ASTM D 1171
Water Absorption (% by weight), Max	.01%	ASTM D 1056
Water Vapor Permeability, Max	0.02 perm-inch	ASTM E 96

**Additional Approvals, Certifications & Compliance**

ANSI/ASHRAE/IES Standard 90.1	Energy Standard for Buildings Except Low-Rise Residential Buildings
IECC®	International Energy Conservation Code®
ANSI/ASHRAE/ICC/USGBC/IES Standard 189.1	International Green Construction Code® (igCC®)
CA Title 24	California Building Energy Efficiency Standards
MEA #171-04-M	City of New York Material and Acceptance Pipe Insulation

**Thickness to Prevent Condensation**

Ambient Temperature and % RH	Pipe Temperature 50°F (10°C)	Pipe Temperature 35°F (2°C)
-77°F (25°C) @ 50% RH	Double Layer	Triple Layer
-85°F (29°C) @ 70% RH	Double Layer plus Double Layer	Triple Layer plus Triple Layer

Find us in  
**MasterSpec®**  
 a product of The American Institute of Architects

**BSD**  
**SpecLink**



282 Industrial Park Road Sweetwater, TN 37874  
 423.337.2493 Fax: 423.337.7675 Toll Free: 866.AEROCEL  
 www.aeroflexusa.com